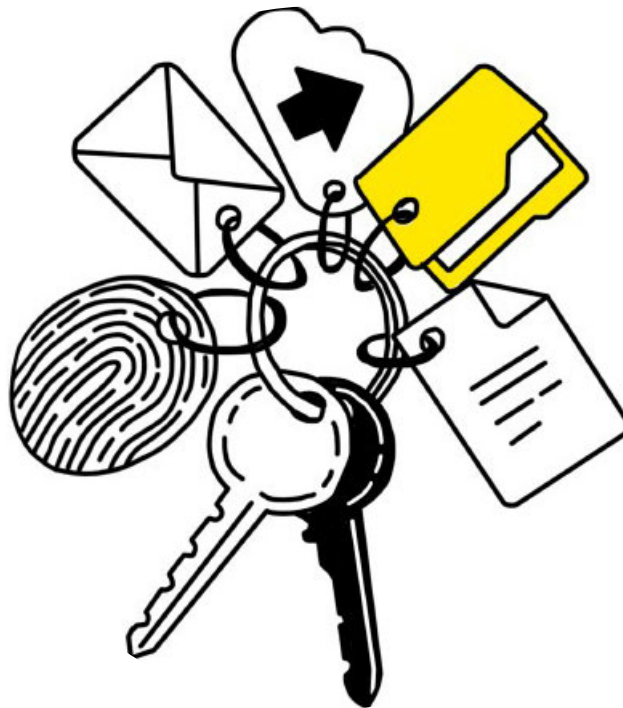


boolebox



Secure File Manager

Features and Characteristics

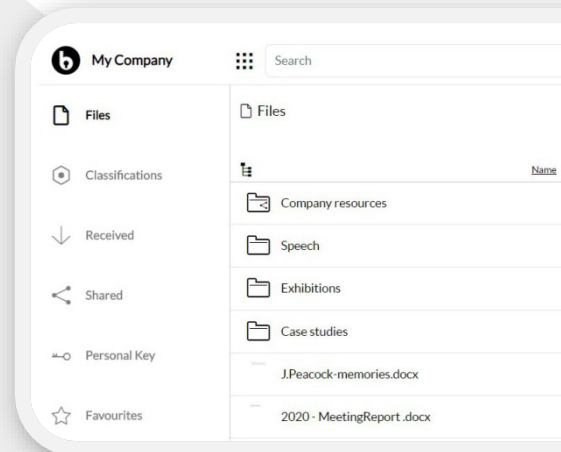


Secure File Manager

The Secure File Manager web app allows you to access a secure environment to upload, organize, edit, and share files and folders, using boolebox's military-grade encryption.

Secure File Manager makes it easy to collaborate with other users by editing with Microsoft 365 and using classifications, tasks, and comments.

Starting from: **9,90 € month/license** (min 5 licenses), 5TB included



The most important features

- **Automatic protection and organization**

The files found within Secure File Manager are automatically encrypted and organized into dedicated groups: "My Files" (which I created or uploaded), "Received Files" (which someone shared with me), "Shared Files" (which I shared), "Personal Key" (which I encrypted with my personal key), "Favorites" (which I marked), "Recent" (the last ones I worked on), and "Recycle Bin."

- **AES 256-bit encryption**

All the files and information you upload and/or create within Secure File Manager are automatically encrypted with an AES 256-bit encryption key.

- **Secure sharing**

You can share all your files and folders with whomever you want without losing control, thanks to the numerous restrictions you can select when sharing. You can also manage access restrictions and permissions for other users in real-time.

- **Sharing templates**

Choose the level of protection to be applied to the file and/or folder being shared by selecting one of the templates preset by your company.

- **Advanced functional restrictions**

When sharing a file/folder, you can set important restrictions for the recipient, such as Anti-Screen Capture or Deter Photoshots, on the file or folder.

- **Revoke sharing**

At any time, you can revoke a share interrupting in real-time the accessibility to the file/folder by the recipient.

- **Collaboration tools**

Comments, tasks, and annotations can be shared with other users with whom a single file or folder has been shared.

- **Personal Key**

You can set personal encryption keys on files and folders you own to prevent access to anyone who does not have that key to decrypt them.

- **Access by fingerprint**

You have the option to set-up access to shared files/folders via fingerprint for the recipient (who will need to use our native mobile Apps for iOS and Android to log in).

- **Classification**

You can classify files and folders and view all classified projects you have been assigned as a user by accessing the Secure File Manager's dedicated section.

- **Activity log**

For each file and folder, you can check, in real-time, which activities were carried out, by whom, at what time, and where.

- **Native apps for iOS & Android**

You can access/manage/share files within your repository even from your mobile phone, thanks to the dedicated mobile Apps.

- **Customization of the interface with your company colors**

Use cases

PROTECTED REPOSITORY

Companies that choose this application are looking for a protected repository to store files that can be easily accessed by those who are authorized, allowing them to be organized within the same protected environment.

SECURE SHARING

One of our customer's primary needs is to safely share these files with colleagues and external collaborators and, therefore, outside the company perimeter. It is common to work with consultants who are not part of the firm on sensitive projects and whose confidentiality must be guaranteed.

COLLABORATION

In addition to sharing, it is crucial to enable working groups to collaborate effectively on individual confidential projects. Thanks to comments, tasks, and annotations, it is possible to work in an organized way on the same file without interrupting its protection at any time.

CLASSIFICATION

We recommend using the **boolebox** classification when collaboration involves multiple files and folders to work on and involves multiple users. By creating a classified project, you can automate the access settings and functional restrictions of individual users or groups of users and organize more effective and faster workflows. The section dedicated to classified files is vital because it is here that you can find all those documents and folders that are part of the various projects set up by the company. Classification allows a protected, effective, and streamlined collaboration between colleagues, work teams, departments, and external collaborators.

APP FOR IOS AND ANDROID

By downloading the **boolebox** mobile app to your mobile phone, you can take photos with your mobile phone and save them directly in the desired folder of your Secure File Manager, without leaving traces in the device gallery. The folder can be shared with other collaborators who need to access the photographic material stored in real-time. This workflow is usually used by sectors that need to share a high level of photos, usually by e-mail. For example, the construction industry involves many real-time e-mails shares containing pictures of multiple sites. The mobile app allows the various Project managers, Architects, and Administration to receive numerous photographs in the classified folder instead of the e-mail box. Hence, resulting in less time sorting through countless e-mails, optimal organization, and eliminating the risk of losing important material.

Complement with Secure File Manager

1. File Encryptor for Windows

File editing

You can use File Encryptor for Windows Client to open and edit Microsoft files you have within the Secure File Manager (or files encrypted locally). Regardless, with this application, you can use the original local applications such as Word, Excel, or PowerPoint and maintain files protected given that a temporary encrypted file is generated on the PC. When you close the file, no trace of it remains on your PC.

Manual local encryption (with file/folder upload)

The File Encryptor for Windows can also be used for the manual encryption of files/folders on the PC or in network shares, allowing you to classify them in projects you are part of; these files will be automatically loaded into the Secure File Manager and made available according to the settings of that particular classification.

Automatic local encryption (with file/folder upload)

The Server version, in combination with the DLP function present in the Dashboard, allows the automatic encryption of files residing on the PC or in network shares. Using this tool, it is possible to choose whether to keep the files/folders encrypted in this way also locally or move them to the classifications within the Secure File Manager without keeping a copy on the local PC.

1. Microsoft 365

Online secure file editing

Thanks to the integration with Microsoft 365 (both for the cloud and on-premise versions), users can work online on the same file simultaneously within the Secure File Manager, both in Windows and Mac environments.

**Do you want to see this
App in action?**

[REQUEST A DEMO](#)

**Do you want to try all
Boolebox apps?**

[TRY IT NOW](#)

**Do you need other
information
about our protection?**

[CONTACT US](#)

www.boolebox.com

For more information write to:
info@boolebox.com